

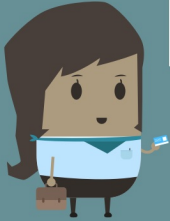
VOTING

The Purpose

I care about services for adults!



I care about business and employment issues!



I care about public transportation and housing options!



I care about health issues!



Voting helps you voice your opinion.

By voting, you can help pick which decision-makers you want to represent you.

Picking decision-makers is important. Their actions can impact issues you care about!

The Process

Step 1

Determine your eligibility

To vote, you must :

- ★ Be at least 18 years old
- ★ Have lived in Pennsylvania for at least 30 days
- ★ Have been a US citizen for at least one month

Step 2

Register to Vote

- ★ Eligible voters are required to register 30 days before the election
- ★ Register Online at www.register.votespa.com
- ★ You can also register in person at a County Voter Registration Office or by mail

Step 3

Learn about the candidates

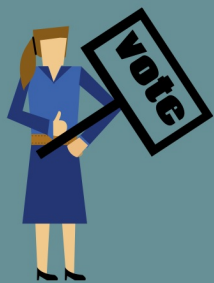
- ★ Search the internet and news sources for information about the candidates. Email them to ask questions and learn more about the issues they support.
- ★ Use reliable sources of information. Check references in articles and websites, read more than one article, and try to learn about the authors' viewpoints.

Step 4

Vote!

- ★ To vote in person, you must go to your designated polling place in person on election day. In special circumstances, you may be able to use an absentee ballot.
- ★ It is recommended that you bring a form of identification. Visit www.votespa.com for different options.

Find your designated polling place by visiting:
www.pavoterservices.state.pa.us



ASERT
bringing autism resources together.

PAautism.org

The Autism Services, Education, Resources and Training Collaborative (ASERT) is a statewide initiative funded by the Bureau of Autism Services, PA Department of Human Services.

The Philadelphia Autism Project is a project of Philadelphia Councilman-At-Large Dennis M. O'Brien, conducted in partnership with the Department of Behavioral Health and Intellectual disAbility Services (DBHIDS).



Philadelphia
AUTISM PROJECT